



INTERSECTIONALITY: The Many Parts of You

Introductions

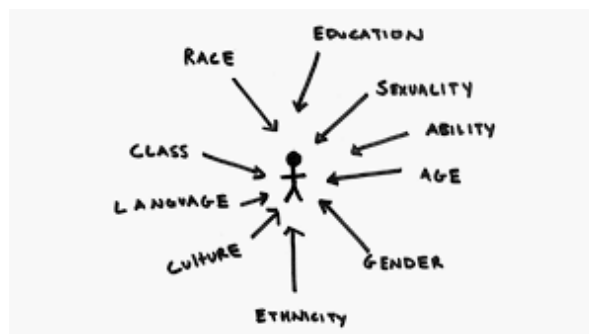


Today we will:

- Define the term **intersectionality**
- Learn to **identify** and embrace all parts of our identity
- Consider how this relates to **leadership**



What is Intersectionality?



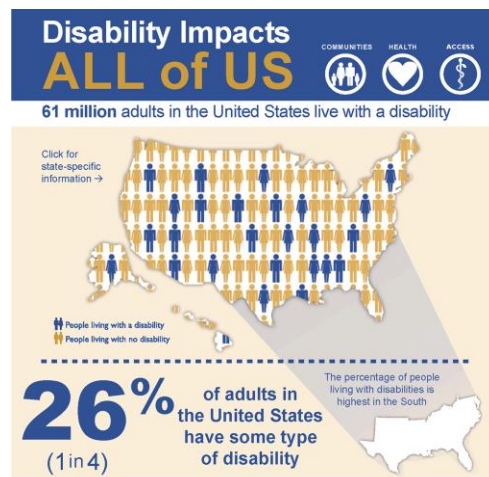
Introductions

- We'd really love to get to know a bit about you all!
- If you're comfortable, please share in the chat:
 - Your name
 - Where you are calling from
 - Something that people might not know about you when they first meet you



Disability

- What does it mean to have a **disability**?

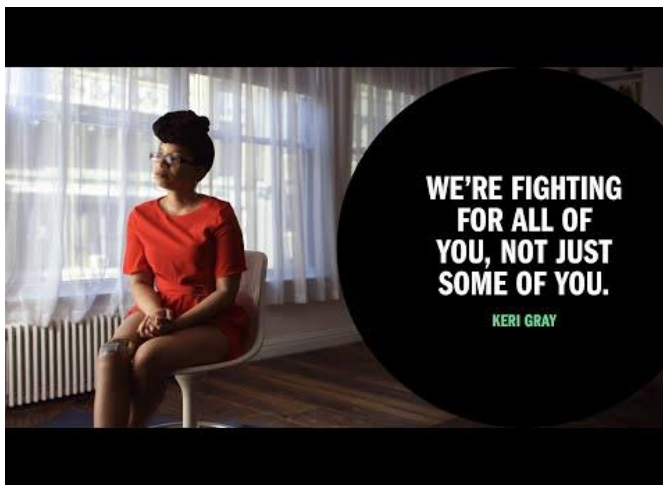


Intersectionality

- Intersectionality is the idea that there are many different parts of ourselves that intersect to make up who we are
- Some of these parts are more visible to other people, while some are hidden



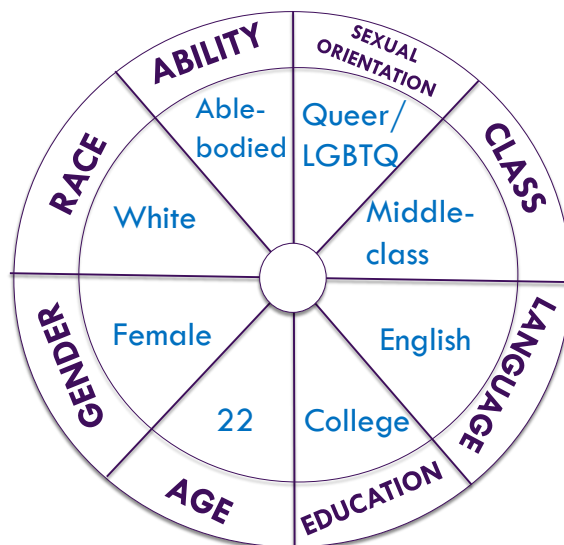
Intersectionality



Social Identities

- Race
- Ethnicity
- Gender
- Class
- Sexual Orientation
- Culture
- Dis/ability
- Age
- Language
- Nationality
- Religion
- and more

Identity Wheel



Identity Wheel continued

- Think about each part of your identity
 - Which labels do you identify with the strongest? Which parts of yourself are you most proud of?
 - Put a star * next to the ones you identify with the most
- Visible versus invisible identities
 - Circle the parts of you that you think people notice about you right away when they first meet you
- You don't always have control over how people see you, but you can always decide who you want to be

Looking Ahead

- So... now what?
 - You've started to think about you and your identity, but why does this matter?
- Think about your **goals** for yourself, especially related to your transition to adulthood
 - Finding a job
 - Finishing high school
 - Moving out
 - Learning to be more independent



Looking Ahead

- When we **know ourselves**, we can know what we want in life and plan better for how to achieve our goals
- When we are part of a marginalized group, the world doesn't always respect us, but we can change that
 - There is power in naming your identity!



Stay Connected!

- Our emails:
 - zsmall@pealcenter.org
 - kspence@pealcenter.org
- Follow PEAL on social media!



PEAL Youth and
Young Adults



@pealyouth

