



Welcome!

FAMILY LEADERSHIP INSTITUTES



## Agenda

5:00 – 5:05 Housekeeping

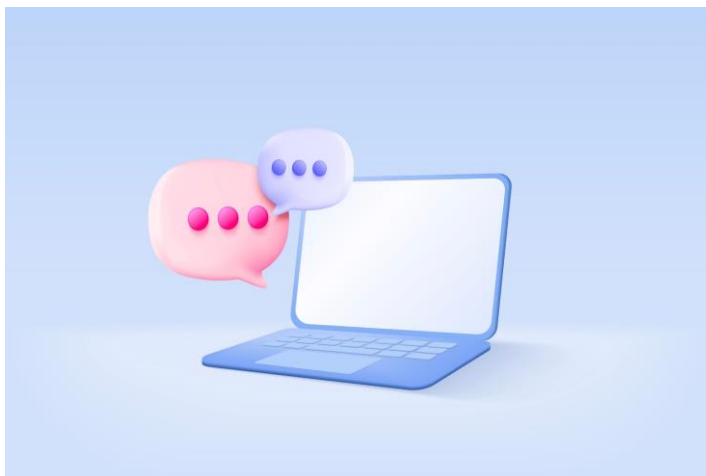
5:00 – 5:20: Rights Done Right breakout groups and discussion with Cindy Duch

5:20 – 6:20: PA Medical Home Program, Renee Turchi and Eileen Thompson

6:20 – 6:30: Burning Issue review and YOLO

6:30 – 7:00: Q and A

## Rights Done Right Discussion



## PA Medical Home Project



## LOYO for Next Week

- Have your child's most recent evaluation accessible during our next session
- What part of the IEP is most important to you to maximize your child's inclusion? (Please write it down a sentence or two and have it out for the next session)
- [Briefly summarize your Burning Issue on Padlet](#)

For additional, non-required learning:

- [A Family's Guide to Understanding Annotated Evaluation and Reevaluation Reports](#)



## FLI Survey

Thank you!



[www.pealcenter.org](http://www.pealcenter.org)  
[info@pealcenter.org](mailto:info@pealcenter.org)  
1-866-950-1040



Serving families across PA with offices  
in Pittsburgh and Philadelphia